

Ashmore Dana Pasar Uang Nusantara IDR

FIXED INCOME

Fund facts Information at 30.04.2026.

Fund size IDR 1,111,821.4 million	Fund inception date 15 September 2016	Fund effective date 29 August 2016	Unit Price IDR1332.93	Benchmark IDR Time Deposit 1M Net
---	---	--	---------------------------------	---

Investment Manager

PT Ashmore Asset Management Indonesia Tbk is an Investment Manager Company whose majority shares are owned by the Ashmore Group. The Ashmore Group is an investment management firm focused on developing countries with more than 20 years of experience and consistent historical performance across various market cycles. Our existence is strengthened by the establishment of our branches in local markets such as Colombia, India, Saudi Arabia, Singapore, Japan, Peru, UAE, United States of America, and Indonesia. PT Ashmore Asset Management Indonesia Tbk was established in 2012 in Jakarta, licensed and supervised by the Financial Services Authority based on a license from BAPEPAM & LK No.KEP-04/BL/MI/2011 dated June 15, 2011. PT Ashmore Asset Management Indonesia Tbk is officially listed in Indonesia Stock Exchange on January 14, 2020.

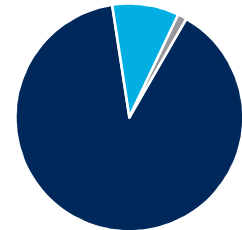
Fund objective and strategy

The investment objective of Ashmore Dana Pasar Uang Nusantara is to give a higher return on investment and higher liquidity levels by investing 100% (one hundred percent) in money market and/or debt securities issued by the Government of the Republic of Indonesia and/or Indonesian corporations offered through a Public Offering and/or traded at the Indonesia Stock Exchange which have maturity less than 1 (one) year.

Fund description and profile

Ashmore Dana Pasar Uang Nusantara is a Money Market Mutual Fund managed by PT Ashmore Asset Management Indonesia Tbk with effective letter No. S-446/D.04/2016.

Investment Policy	Fund	Asset Allocation	Fund
Money Market and/or Cash Equivalent	0% - 100%	Government Bonds	89.23%
		Corporate Bonds	9.50%
		Money Market and/or Cash Equivalent	1.27%



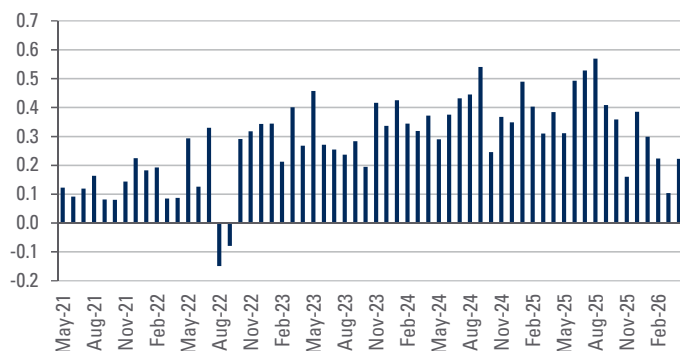
■ Government Bonds ■ Corporate Bonds ■ Cash/MM

Performance

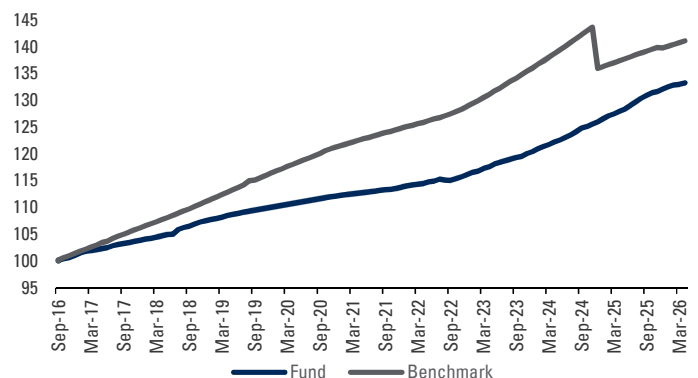
Net returns %	1 month	3 months	6 months	YTD	1 year	3 years	5 years	Since inception
Fund	0.22	0.55	1.40	0.85	4.13	13.39	18.32	33.29
Benchmark	0.23	0.70	1.09	0.94	2.68	9.29	15.20	41.12
Excess	-0.01	-0.15	0.31	-0.09	1.45	4.10	3.12	-7.82

Highest 1M Performance SI	July 2018	0.86%
Lowest 1M Performance SI	August 2022	-0.15%

Monthly Performance in the last 5 Years



Mutual Fund Investment Performance Since Launch



Source: Bloomberg, Ashmore

Fund information			
Bloomberg IDR: ASHMPUN IJ	Accumulation/Income N/A	Subscription fee 0.00%	Registered for sale For registered countries, please visit www.ashmoregroup.com
ISIN IDR: IDN000253606	Minimum initial investment IDR 100,000	Redemption fee 0.00%	Administrator PT Bank CIMB Niaga Tbk
SEDOL IDR: -	Subsequent Subscriptions IDR 100,000	Switching fee Based on prospectus	Investment manager PT Ashmore Asset Management Indonesia Tbk
Domicile Indonesia	Redemptions IDR 100,000	Management fee Max. 1.00% per annum	Valuation Period Daily
OJK Effective Letter Reg Number S-446/D.04/2016	Maximum Number of Units offered 3,000,000,000	Custody fee Max. 0.25% per annum	

Benefits of Investment Products

Professional management
Potential growth of investment value
Investment diversification
Low investment cost
Easy investment liquidation

Top 10 holdings exposure %	Security Type	Fund
Indonesia Govt Sukuk 6% 15/01/2027	Government	34.8
Indonesian Govt Sukuk 4.875% 15/07/2026	Government	26.0
Indonesia Govt 5.125% 15/04/2027 Fr90	Government	17.4
Indonesia Govt 8.375% 15/09/2026 Fr56	Government	11.0
Astra Sedaya Finance Pt 6.15% 14/07/2026	Corporate	2.3
Surya Artha Nusantara Fi 6.25% 18/07/2026	Corporate	2.3
Adira Dinamika Multi Fin 6.2% 18/07/2026	Corporate	1.8
Bank Maybank Indonesia Tbk Pt Deposit	Deposit	1.4
Mandiri Tunas Finance 6.15% 18/07/2026	Corporate	1.1
Summit Oto Finance 6.55% 05/07/2026	Corporate	0.9

Information Regarding Mutual Fund Ownership

In accordance with the prevailing OJK Regulations, proof of subscription, switching and redemption transaction is a legal proof of Participation Unit ownership that is issued and delivered by the Custodian Bank via Securities Ownership Reference (AKSES) facility. Participation Unit Holders can verify the Investment Fund ownership through the website <https://akses.ksei.co.id/>.

Bank Custodian: PT Bank CIMB Niaga Tbk is the first national private Custodian Bank to obtain approval from the Capital Market Authority based on the Decree of the Chairman of Bapepam number: KEP-71/PM/1991 dated August 22, 1991 as a Custodian Bank in the Capital Market.

Contacts

PT Ashmore Asset Management Indonesia Tbk

Jalan Jend. Sudirman Kav. 52-53, Jakarta 12190

E: Contact-Indonesia@ashmoregroup.com

For more complete prospectus information, please access our website www.ashmoregroup.com

Disclaimer (Important to Read):

- INVESTMENTS THROUGH INVESTMENT FUNDS CONTAIN RISKS. BEFORE DECIDING TO INVEST IN INVESTMENT FUNDS, PROSPECTIVE INVESTORS MUST READ AND UNDERSTAND THE PROSPECTUS. PAST PERFORMANCE DOES NOT GUARANTEE/REFLECT INDICATE FUTURE PERFORMANCES. OTORITAS JASA KEUANGAN ("OJK") NEITHER APPROVED NOR DISSAPPROVED THESE SECURITIES, IT ALSO DOES NOT CONFIRM THE CORRECTNESS OR THE ADEQUACY OF THE CONTENTS OF THIS PROSPECTUS. ANY DECLARATION CONTRARY TO THESE STATEMENTS IS VIOLATING THE LAW. PT Ashmore Asset Management Indonesia Tbk as the Investment Manager is registered and supervised by OJK.
- The Investment Manager may reject your application if it does not meet the applicable requirements and regulations.
- You should carefully read this Product and/or Service Information Summary before agreeing to purchase the product, and you have the right to ask the Mutual Fund Selling Agent (APERD) any questions relating to this Product and/or Service Information Summary.
- This Product and/or Service Information Summary does not form part of the prospectus. You are still required to read and understand the prospectus before investing. This product information summary does not replace the Investment Fund Prospectus and is prepared by PT Ashmore Asset Management Indonesia Tbk solely to provide information and does not constitute an offer to buy or request to sell. All information contained in this document is accurate. Investors are advised to seek professional opinion before making an investment decision as required. Past performance does not necessarily serve as a guide for future performance, nor is it an estimate made to give an indication of future performance or trends.
- INVESTMENT FUNDS ARE CAPITAL MARKET PRODUCTS AND NOT PRODUCTS ISSUED BY SELLING AGENTS/ BANKS. SELLING AGENTS OF INVESTMENT FUNDS ARE NOT RESPONSIBLE ON CLAIMS AND THE RISK OF MANAGEMENT OF INVESTMENT FUND PORTFOLIO CONDUCTED BY THE INVESTMENT MANAGER.
- This document is published by PT Ashmore Asset Management Indonesia Tbk, regulated by the Financial Services Authority (Otoritas Jasa Keuangan or "OJK"). This document is made in good faith by PT Ashmore Asset Management Indonesia Tbk with the intention to provide information and not as an invitation, recommendation or offer to invest or subscribe Participation Units of the Mutual Fund. Past performance is not a guarantee, indication or estimate for future performance of the Investment Fund. Any losses arising from the investment is not the responsibility of PT Ashmore Asset Management Indonesia Tbk. Prospective investors who consider subscribing Participation Unit of the Mutual Fund are encouraged to read the latest Prospectus and to obtain professional advice and expertise in legal, finance, tax and other professionals prior to deciding the investment because the material in this document is not intended to provide adequate information on investment. Information and opinions in this document are obtained from our sources; however PT Ashmore Asset Management Indonesia Tbk does not guarantee its accuracy and integrity. Estimation of results, achievements may differ materially with actual results. Investments in mutual funds are not part of third party deposits at the bank and are not included in the scope of the deposit insurance program object by the deposit insurance agency / Lembaga Penjamin Simpanan (LPS).

Risk Classification*



* Referring to POJK No. 17/POJK.04/2022 concerning the Code of Conduct for Investment Managers

Main risk factors

Risk of economic and political condition
Risk of default
Liquidity risk
Risk of diminishing NAV of each participation unit
Risk of change of regulation
Risk of dissolution and liquidation participation unit

Requirements and Procedures

A prospective Unit Holder wishing to purchase Units for the first time must complete and sign the relevant forms, together with the supporting documents required to open an account with the Investment Manager or the office of the Mutual Fund Selling Agent, including among others:

- Account Opening Form
- Risk Profile Form
- Subscription Form
- Copy of identity card or passport/KIMS/KITAS for individual customers
- Copy of the required corporate legal documents for corporate/legal entity customers